



# SFD PI: Introduction and latest updates



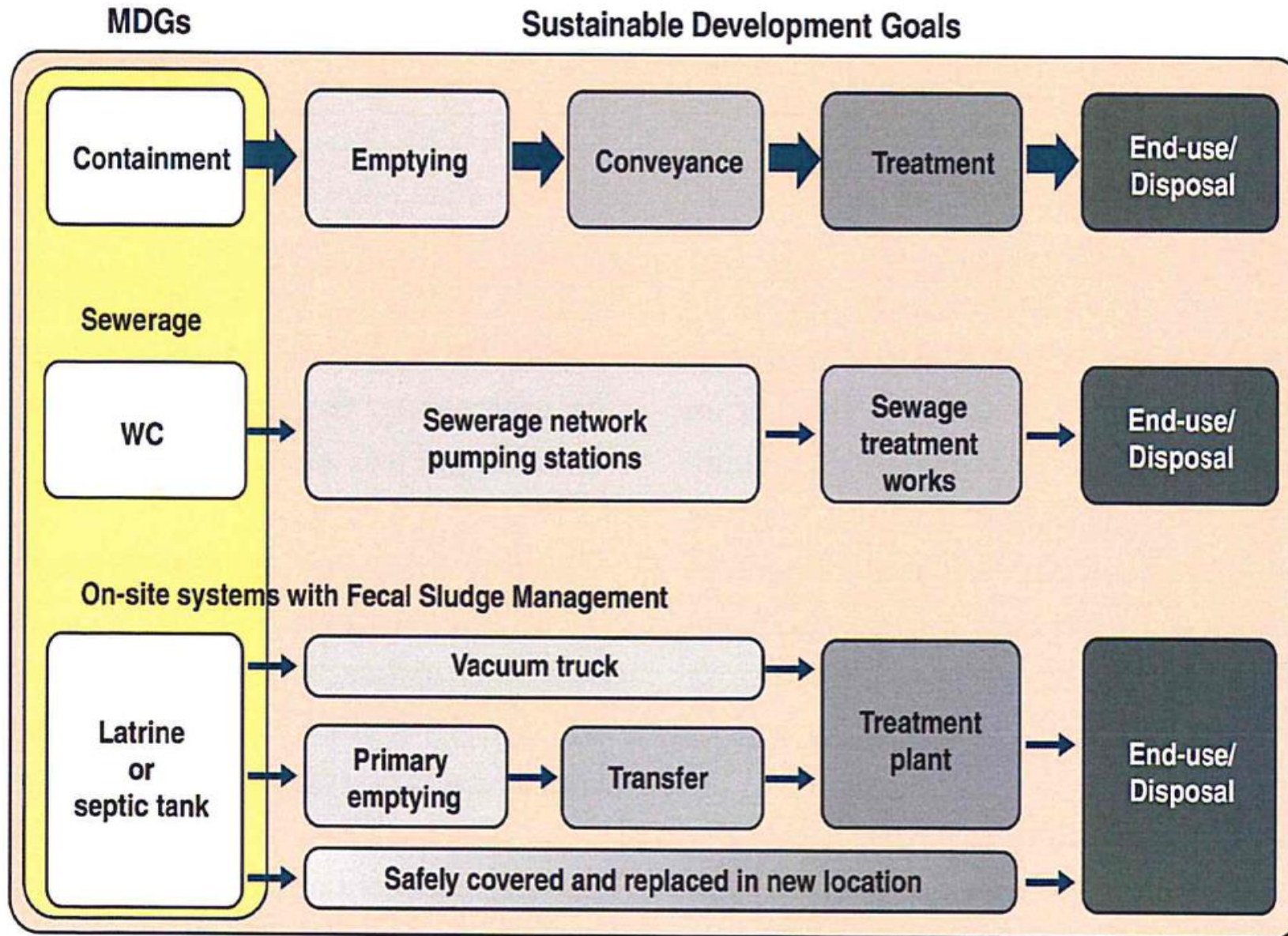


# Short introduction to the SFD and its Promotion Initiative

---



# Story behind the SFD - why was it developed?



sustainable sanitation alliance



# Story behind the SFD - why was it developed?

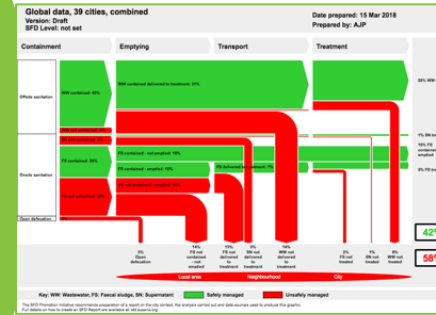


# Story behind the SFD – what does it include?

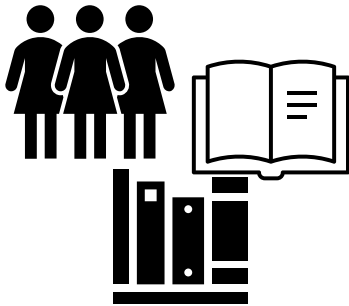


An SFD is a tool to readily understand and communicate how excreta physically flow through a city or town

Diagram showing pathways from defecation to final fate



Complete record of all data sources



Narrative report on service outcomes and delivery context



sustainable sanitation alliance

# Story behind the SFD – what does the graphic show (and not show)?



- All SFDs are based on credible BUT not always accurate data

- Percentages of excreta transported through sewers or emptied from containment (off-site / onsite sanitation)

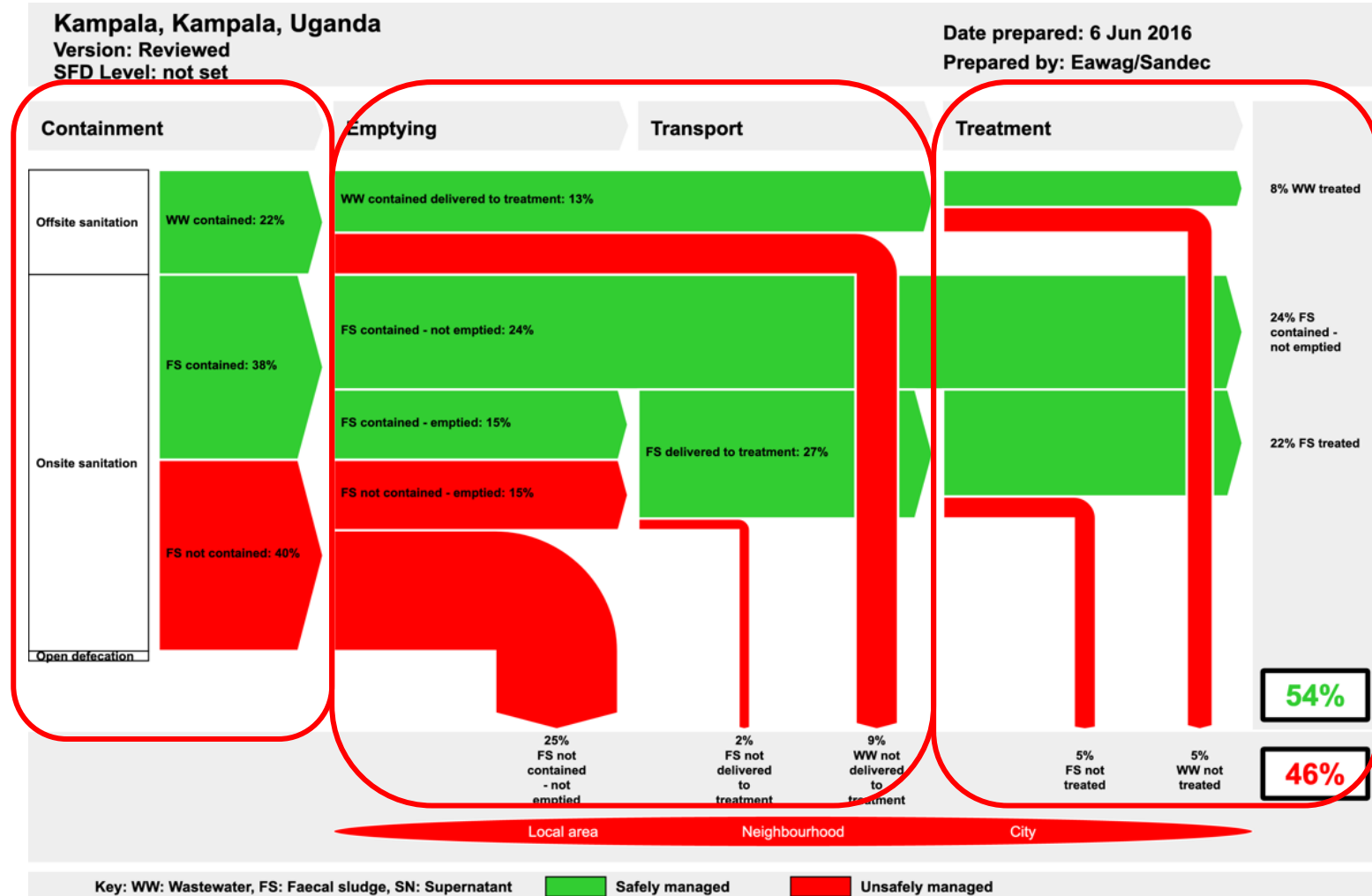
➤ Not a detailed planning tool

- Percentage of faecal sludge and wastewater delivered to treatment

➤ Not a quantification tool with accurate volumes

- Percentage of excreta treated or not treated

➤ Not a detailed assessment of treatment performance



Produced with support from the SFD Promotion Initiative with funding from the Bill & Melinda Gates Foundation. The SFD Promotion Initiative recommends that this graphic is read in conjunction with the city's SFD Report which is available at: [sfd.susana.org](http://sfd.susana.org)

## The genesis

- **In 2013:** Analysis of excreta management in 12 cities initiated by the World Bank
- **In 2014:** a group of institutions convened to create the SFD Promotion Initiative funded by BMGF with the support of BMZ (through GIZ NaSa SV – SuSanA)
- **2014 – now:** SFD Promotion Initiative has implemented 3 consecutive phases
- **Now → future:** what's the best way forward?

## Partners of the SFD Promotion Initiative





## Outcomes of the SFD Promotion Initiative:

- Development of the SFD approach and SFD tools
- Creation of the SFD online Portal <https://sfd.susana.org/>
- Continuous update, management and maintenance of the Portal
- Support provided to create, revise and publish SFD reports on the Portal
- Support dissemination of the SFD through trainings, dedicated events and sessions at sector conference
- Creation of a SFD Community (through SFD PI meetings)





# Possible uses of an SFD promoted by SFD PI



1. Awareness raising on excreta management
2. Advocacy to demonstrate the targeted needs for improved sanitation service delivery
3. Engage sanitation experts, political leaders and civil society in coordinated discussions about excreta management in their city
4. Inform decisions regarding urban sanitation planning processes and investments
5. Support the design process of an intervention or a project
6. Monitor the sanitation situation at city/town level
7. Guide towards further development in/of national (sector) policies – together with the CSDA

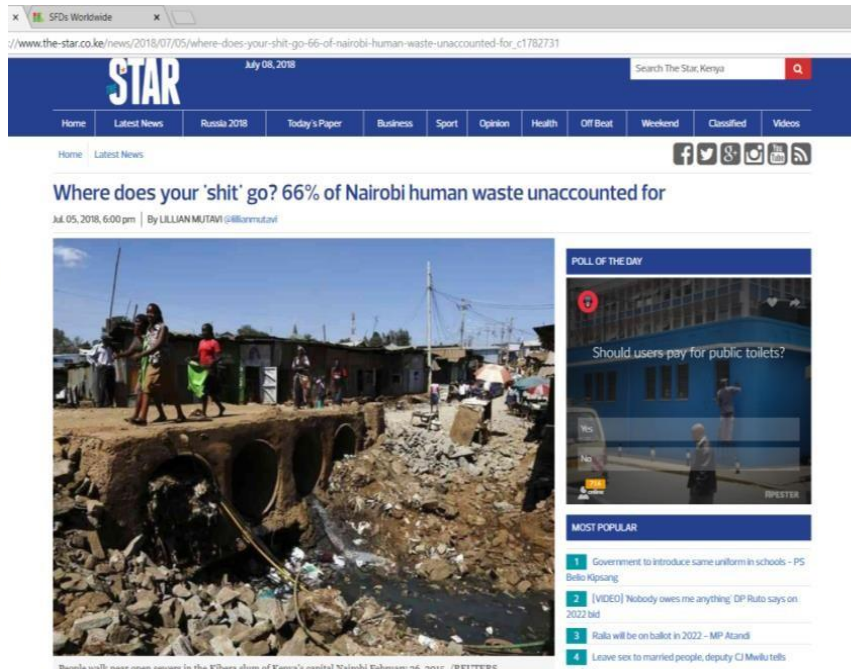
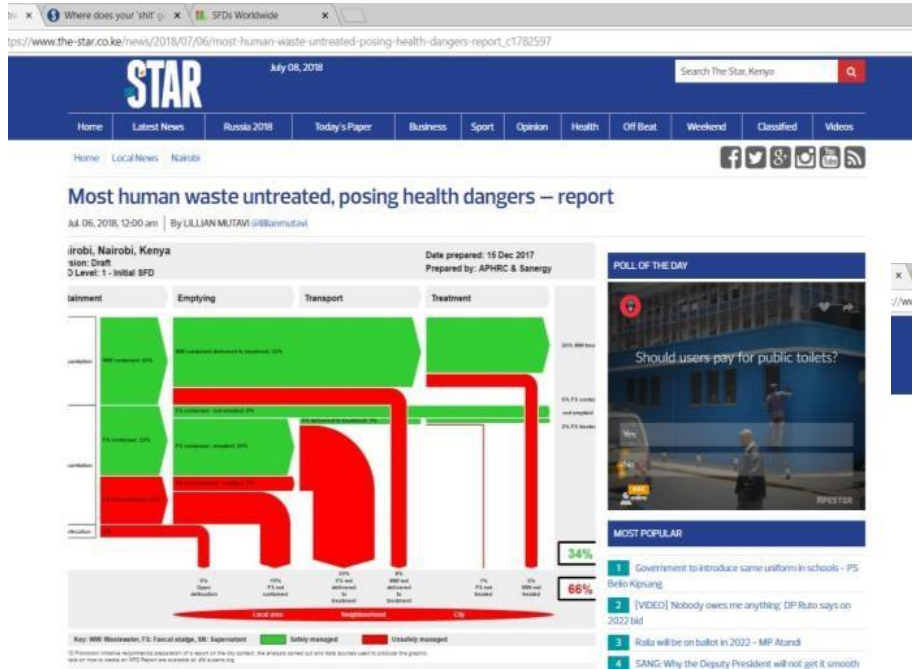


sustainable  
sanitation  
alliance

# SFDs create the language we need and help changing the discourse!



## Kick-start a discussion on sustainable sanitation in Kenya



sustainable  
sanitation  
alliance



SFDs create the language we need and help changing the discourse!



Kick-start a discussion on sustainable sanitation in India



sustainable sanitation alliance



# SFDs create the language we need and help changing the discourse!



## Gain political support for more sustainable sanitation in India



Image: Press Trust of India (PTI)

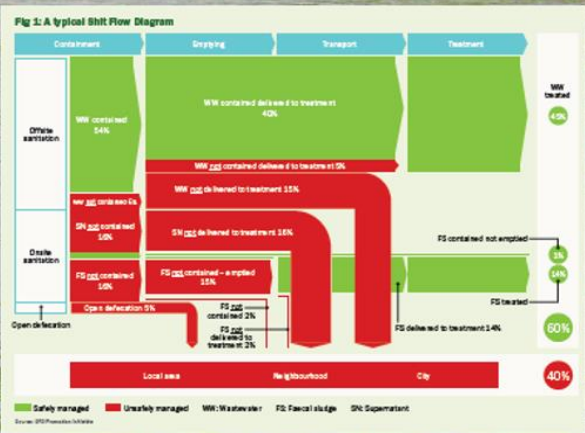


Image: Arne Panesar

sustainable sanitation alliance



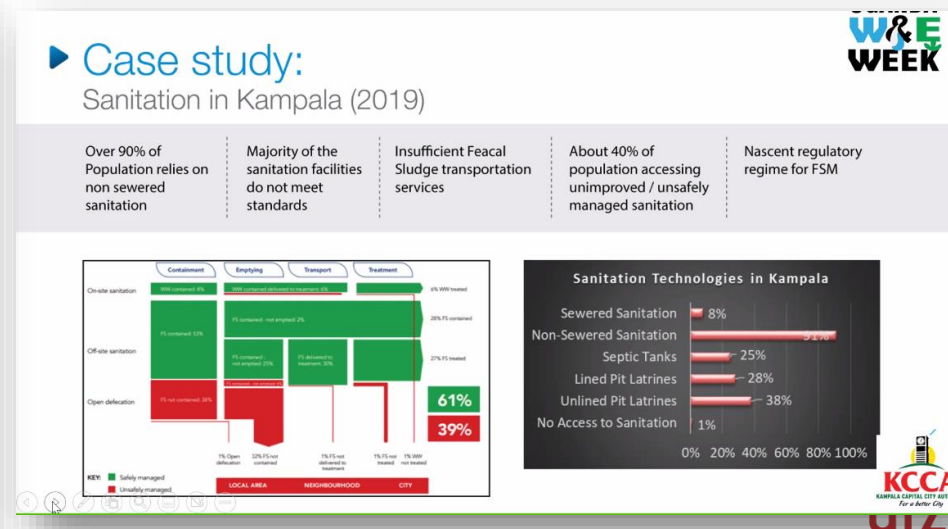


# Today's impact of the SFD Promotion initiative



- SFD is one of the reference tools in the Sector
- Current status: almost 250 cities have an SFD (180 Mill people)
- SFD presented by local authorities at international conferences: Uganda Water Week, FSM7, UN Water Conference

Contributing to the anchoring of the tool in the sector



# SFD Tool and Portal Updates

---

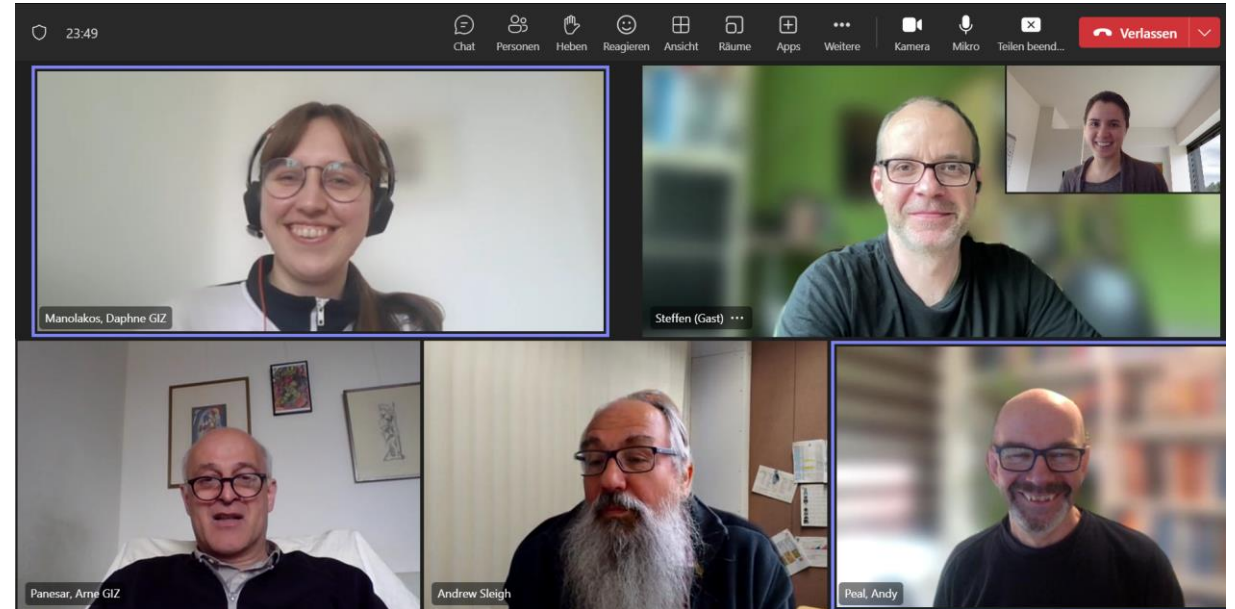




## Monthly technical meeting

between Univ. of Leeds and GIZ to continuously maintain and update the SFD portal:

- Report review and upload process
- Software update
- Content and layout of the website
- New portal features
- Translation offer



**Contributing to the sustainability  
of the SFD portal**

sustainable  
sanitation  
alliance

## Optimization of SFD report review and publishing processes to

- reduce complexity and avoid mistakes
- reduce time and efforts, hence costs
- enable easy hand-over
- ensure sustainability



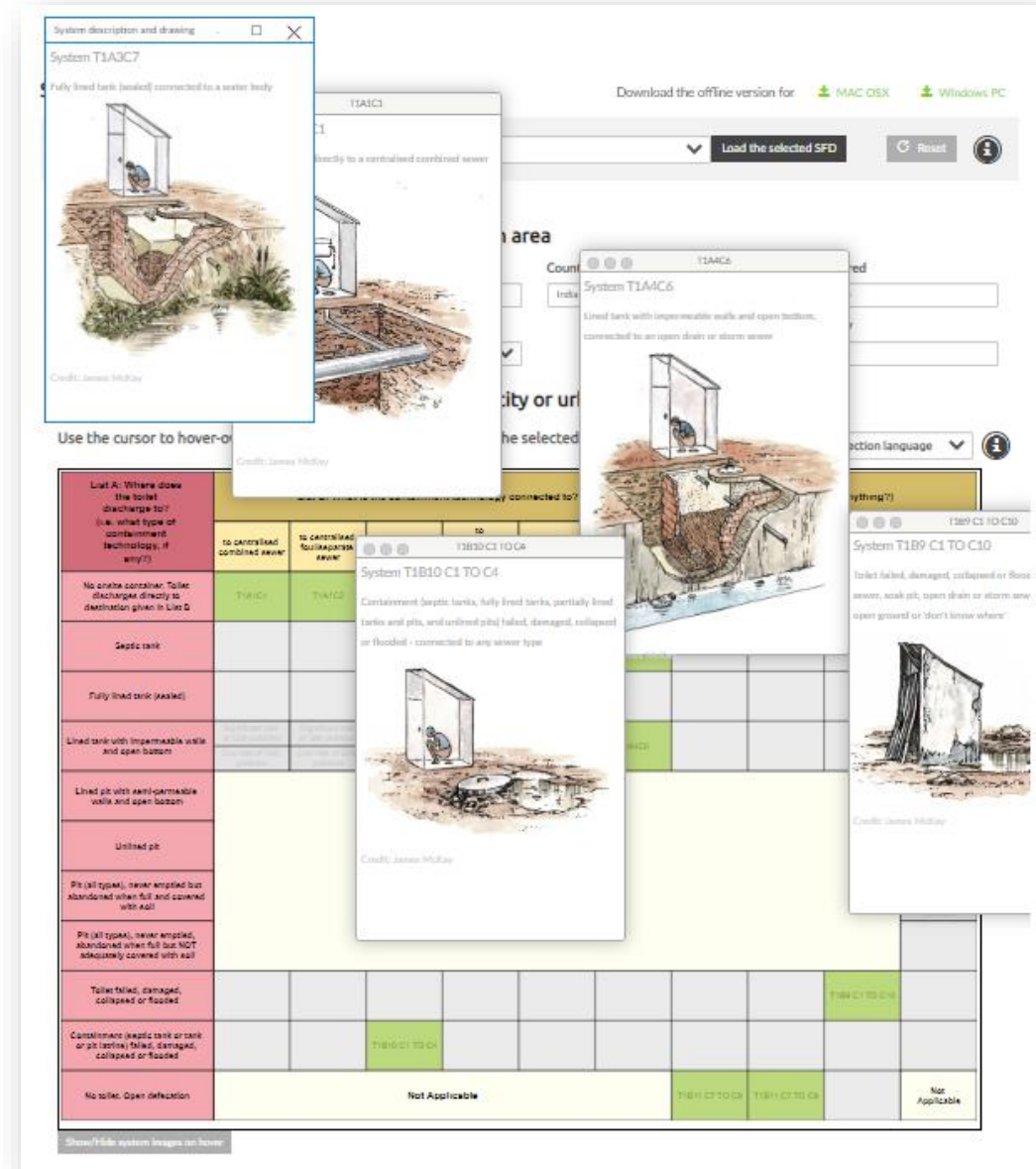
## Prepare software update to

- provide a state-of-the-art web portal
- ensure continuity of services



## Improved SFD selection matrix with pop-up images to:

- Facilitate the use of the tool
- Visualize the sanitation system combinations proposed by the SFD Matrix
- Agree on terminologies and definitions
- Avoid mistakes when entering the data



The screenshot displays the SFD selection matrix interface. It features a grid of cells representing different sanitation system combinations. Each cell contains a small icon or image. Pop-up windows are shown for several cells, providing detailed descriptions and illustrations of the systems. For example, one pop-up for 'System T1A3C7' shows a 'Fully lined tank (sealed) connected to a water body'. Another pop-up for 'System T1A6C6' shows a 'Lined tank with impermeable walls and open bottom, connected to an open drain or storm sewer'. The matrix also includes a legend for 'Linet A: Where does the toilet discharge to?' with categories like 'No onsite container', 'Septic tank', 'Fully lined tank (sealed)', 'Lined tank with impermeable walls and open bottom', 'Lined pit with semi-permeable walls and open bottom', 'Unlined pit', 'Pit (all types)', 'Toilet filled, damaged, collapsed or flooded', and 'No toilet: Open defecation'. The interface also has a search bar, a 'Load the selected SFD' button, and a 'Download the offline version for' section with options for 'MAC OSX' and 'Windows PC'.

Linet A: Where does the toilet discharge to? (i.e. what type of containment technology, if any?)	to centralized combined sewer	to centralized sewerage main	to T1B10 C1 TO C4	to T1B10 C1 TO C4	to T1B10 C1 TO C4	to T1B10 C1 TO C4
No onsite container: Toilet discharges directly to destination given in Linet D	T1A3C7	T1A7C2				
Septic tank						
Fully lined tank (sealed)						
Lined tank with impermeable walls and open bottom						
Lined pit with semi-permeable walls and open bottom						
Unlined pit						
Pit (all types), never emptied but abandoned when full and covered with soil						
Pit (all types), never emptied, abandoned when full but NOT adequately covered with soil						
Toilet filled, damaged, collapsed or flooded						T1B10 C1 TO C4
Containments (septic tank or tank or pit (septic) filled, damaged, collapsed or flooded)			T1A3C7			
No toilet: Open defecation			Not Applicable		T1B10 C1 TO C4	T1B10 C1 TO C4

## Continuous update of the content and layout of the website based on:

- Feedback from users
- Feedback from SFD meetings and workshops
- Comparison with other websites and portal
- Analytics of the website



### Why you need an SFD for a better future for your city?

Sanitation systems are complex and include both household services such as toilets and sewer connections, and city-scale services such as sewers, collection and emptying services, wastewater treatment plants and faecal sludge treatment plants. In any given city many different organisations may be involved, each with different sources of funding. Few people working in sanitation understand how the entire system works; they are often only familiar with their own small part. Critical areas of failure and the needs of some groups, particularly low-income communities and unplanned areas, are thus often overlooked and may not be considered in planning at all.

The SFD is a process, report and diagram that allows multiple actors to come to a joint understanding of the entire sanitation system as it currently operates. This allows for identification of gaps and problem areas. The SFD can form a sound initial basis for planning investments to achieve citywide inclusive sanitation.

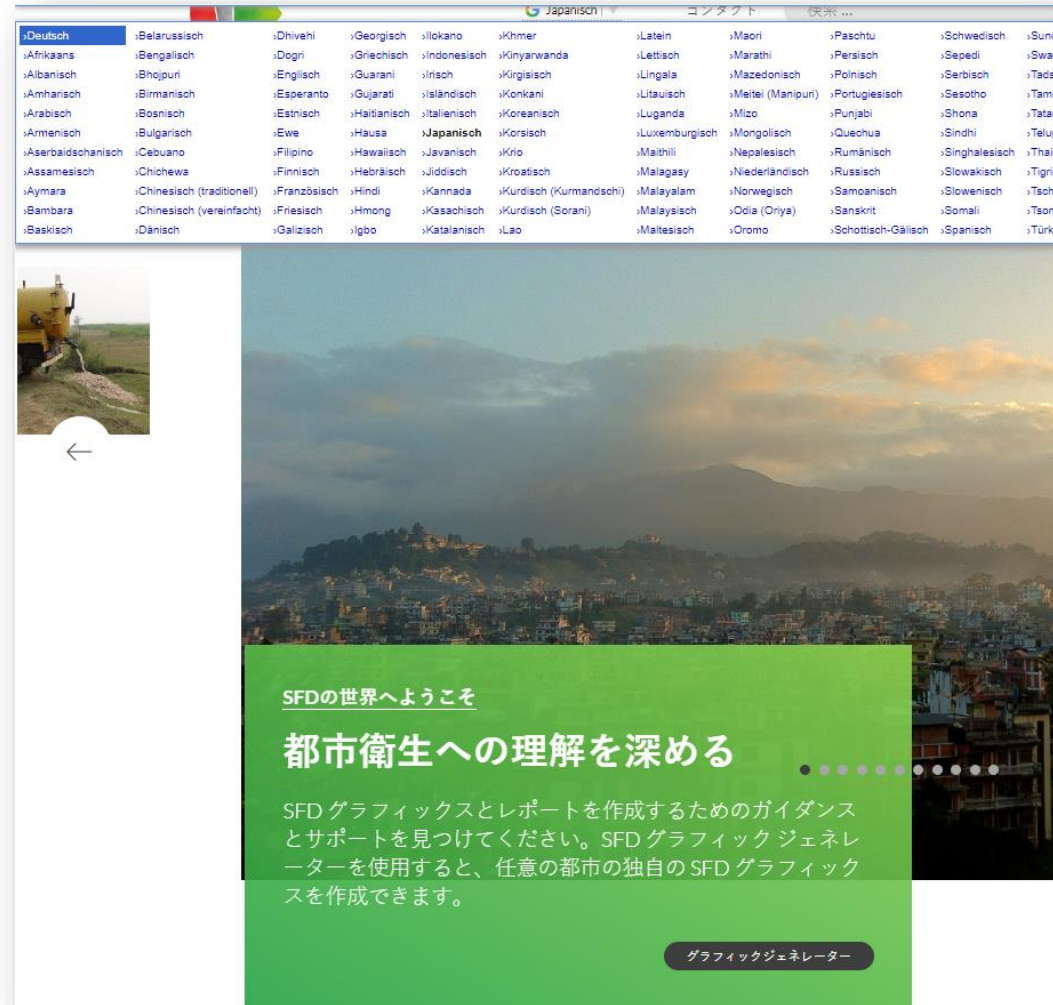


sustainable  
sanitation  
alliance



## Translation offers: SFD goes multilingual

- The SFD Manual is available in French, Arabic, Spanish and Portuguese
- The content of the website can be translated in more than 100 languages



sustainable  
sanitation  
alliance

