

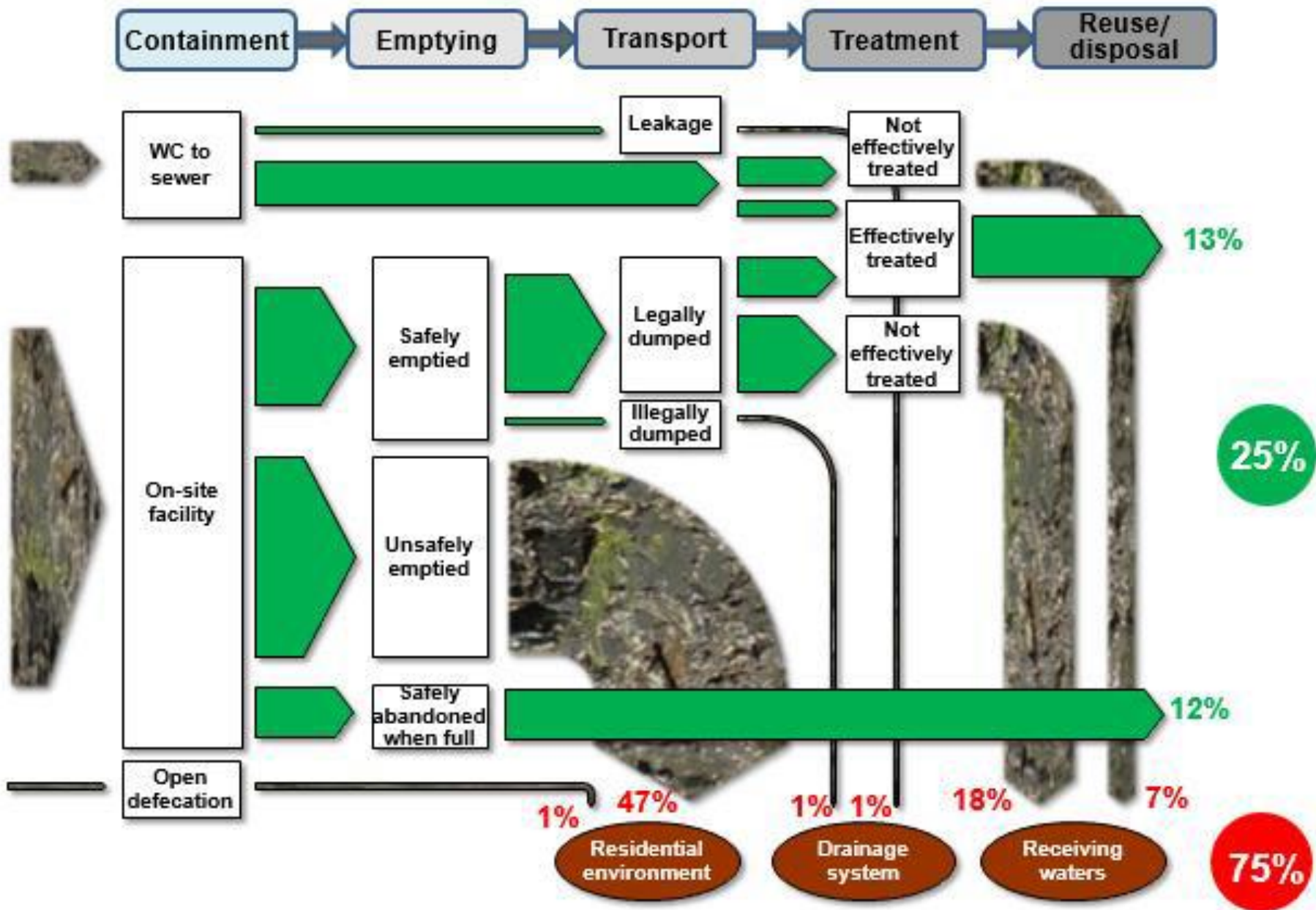
# Planning of climate-friendly sanitation services in the peri-urban areas of Lusaka

Presented at 23<sup>rd</sup> SuSanA meeting, Chennai, India

Feb. 2017

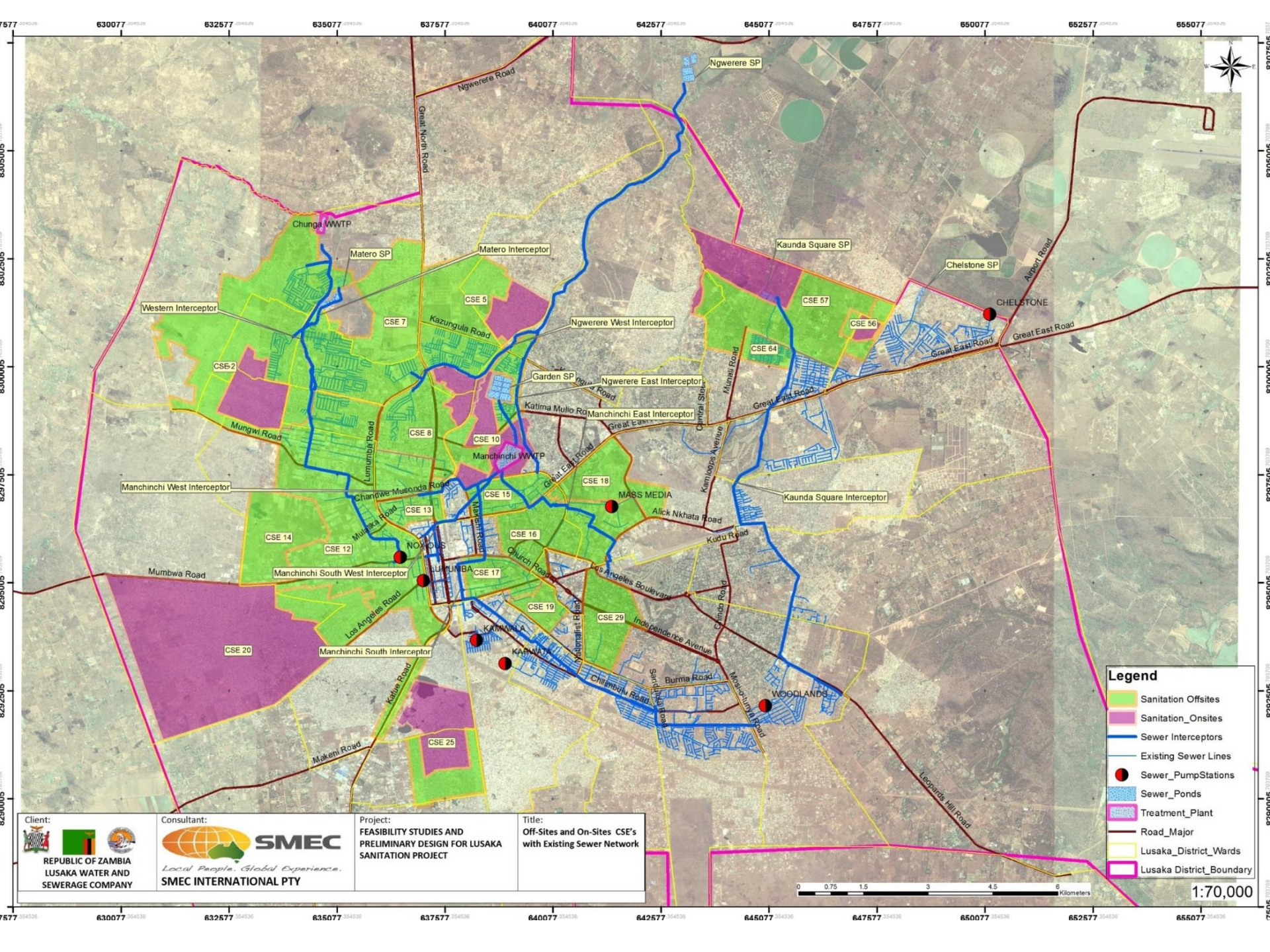
Trevor SurrIDGE

GIZ – Zambia CFS-Lusaka



SFD: Lusaka faecal waste flows (Source: WSP, 2014)

# Overview of LSP



**Legend**

- Sanitation Offsites
- Sanitation\_Onsites
- Sewer Interceptors
- Existing Sewer Lines
- Sewer\_Ponds
- Treatment\_Plant
- Road\_Major
- Lusaka\_District\_Wards
- Lusaka District\_Boundary



<p>Client:</p> <p>REPUBLIC OF ZAMBIA LUSAKA WATER AND SEWERAGE COMPANY</p>	<p>Consultant:</p> <p><b>SMC</b> <i>Local People. Global Experience.</i> SMC INTERNATIONAL PTY</p>	<p>Project:</p> <p><b>FEASIBILITY STUDIES AND PRELIMINARY DESIGN FOR LUSAKA SANITATION PROJECT</b></p>	<p>Title:</p> <p><b>Off-Sites and On-Sites CSE's with Existing Sewer Network</b></p>
--	--	--	--

630077 632577 635077 637577 640077 642577 645077 647577 650077 652577 655077

630077 632577 635077 637577 640077 642577 645077 647577 650077 652577 655077

# Overview of CFS-Lusaka

## Project Goal

**In peri-urban areas of Lusaka, prerequisites for implementation of climate-friendly sanitation services and Faecal Sludge Management (FSM) have been established.**

## Core Partners

*Who is involved?*



- Ministries: MWDSEP & MLG
- Lusaka City Council (LCC)
- Lusaka Water and Sewerage Company (LWSC)
- National Water Supply & Sanitation Council (NWASCO)
- Zambia Environmental Management Agency (ZEMA)
- Private service providers

## Action Areas

*What areas do we work in?*

### Action Area A

**Climate friendly On-site Sanitation (OSS) & FSM**

Appropriate procedures for the introduction of OSS and FSM reducing greenhouse gas emissions are developed.

- Stocktaking of adapted technical procedures for CFS & FSM reducing green-house gas emissions.
- Development & analysis of private sector oriented business models for FSM
- Trial of procedures for desludging and transport to treatment plants acc. to and technical specifications.

### Action Area B

**Coordination mechanisms for On-site Sanitation**

Prerequisites for coordination of measures for OSS with climate-friendly FSM have been established for peri-urban areas of Lusaka.

- Establishment of the OSS TWG with LWSC.
- Harmonisation of list of criteria for gender specific requirements for sanitation facilities for application.
- Revision of sanitation strategy for peri-urban areas, especially regarding climate-friendly approaches.

### Action Area C

**Monitoring of climate relevant regulations in sanitation services**

Prerequisites for the monitoring of compliance with climate relevant regulations in sanitation (FSM and SWM) improved.

- Development of monitoring standards of climate relevant regulations in sanitation.
- Strengthening of selected LCC site offices in sanitation.
- On-job-training for staff of LCC's Public Health dept
- Drafting of by-law for implementation of OSS and climate-friendly FSM.

### Action Area D

**Cap. Dev. for public and private service providers for OSS and FSM**

Prerequisites for improvement of qualifications of public & private service providers of CF wastewater mgt are established.

- Training needs assessment for O&M of CF wastewater systems/FSM.
- Dev. of training plans with curricula for vocational training measures.
- Selection of training institutions, training of vocational teachers.
- Qualification of LWSC staff for LSP financed training measures.

## Quick Facts

- **Timeframe:** October 2016 – August 2019
- **Volume:** €5 million EUR (*German Contribution*)
- **Focus:** Integrating climate-friendly on-site sanitation and faecal sludge management in peri-urban areas of Lusaka complimentary to the multi-donor Lusaka Sanitation Programme (LSP, over 200 Mio. EUR)
- **Offices:** Lusaka

## Expected Results

*What are our intended results?*

## Key Activities

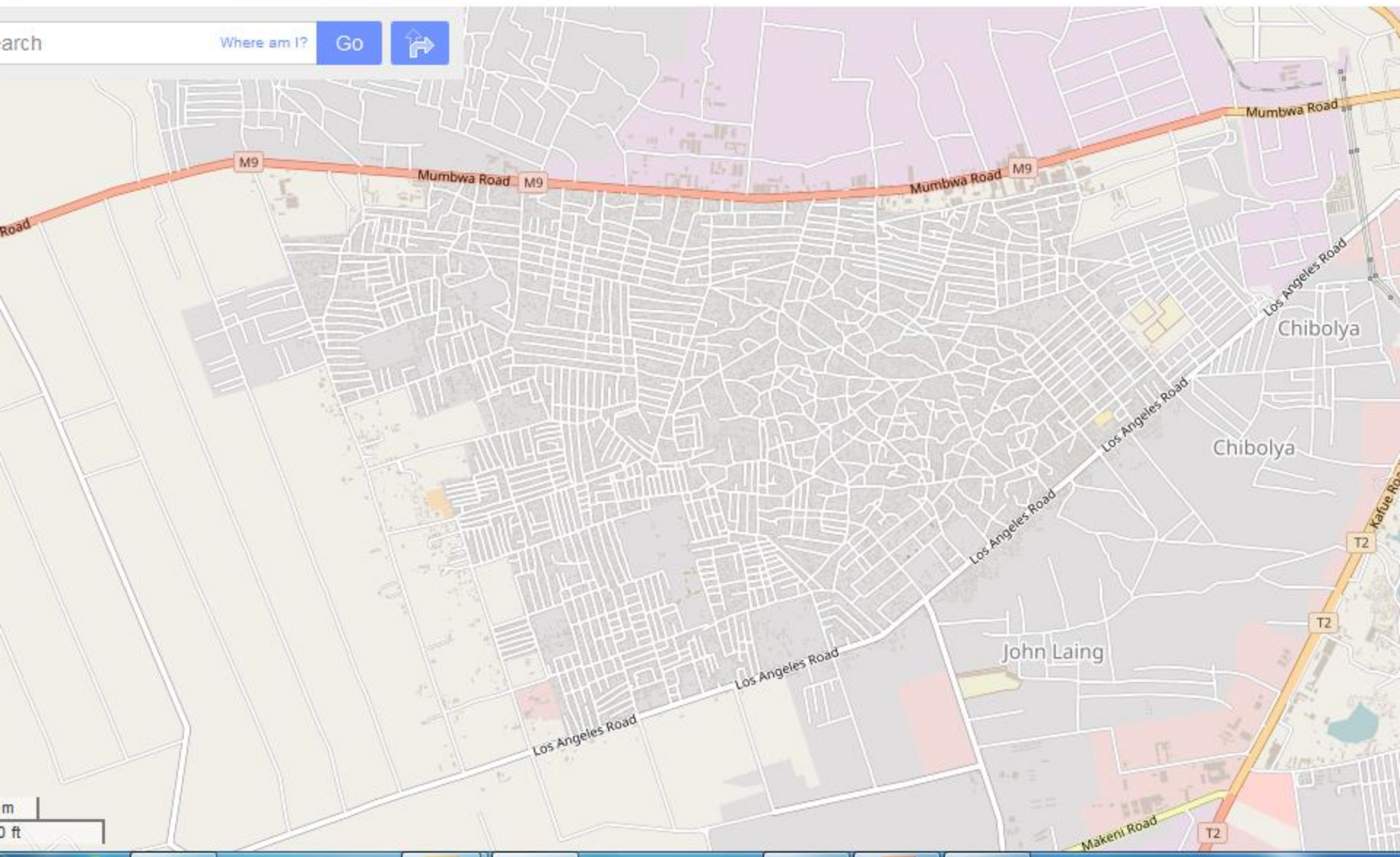
*What do we do?*

### Contact

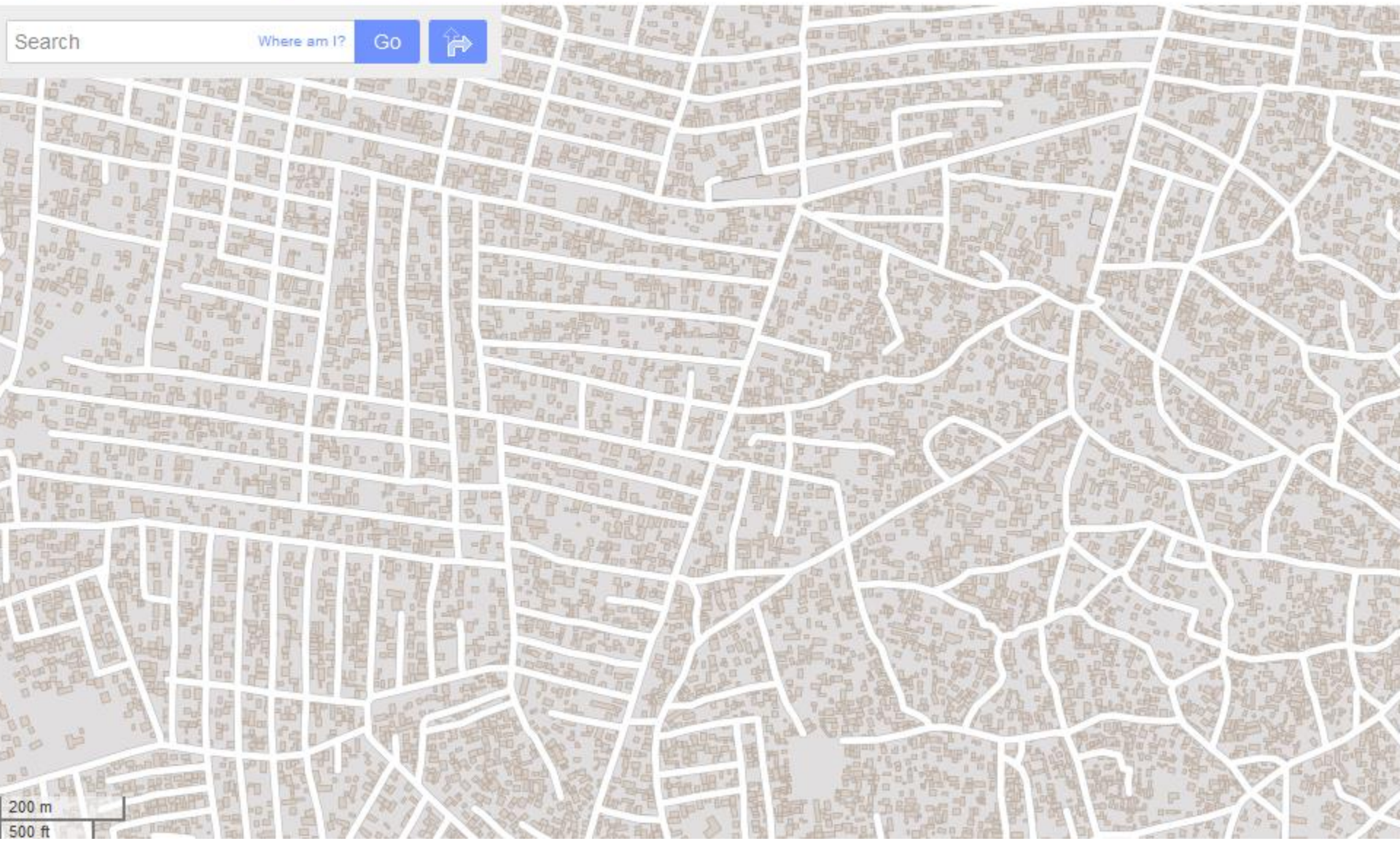
**Trevor SurrIDGE**  
[trevor.surridge@giz.de](mailto:trevor.surridge@giz.de)

**Conrad Thombansen**  
[conrad.thombansen@giz.de](mailto:conrad.thombansen@giz.de)

# City-wide FSM







Search  Where am I? [Go](#) [↶](#)

200 m  
500 ft

# How is this climate-friendly?

- No treatment to Treatment
- Groundwater protection
- Climate footprint considerations in Emptying Equipment and Transport technology
- Clarity of roles in detail in the area of FSM between Regulators -> Local Authority -> Commercial Utility -> Private Sector